

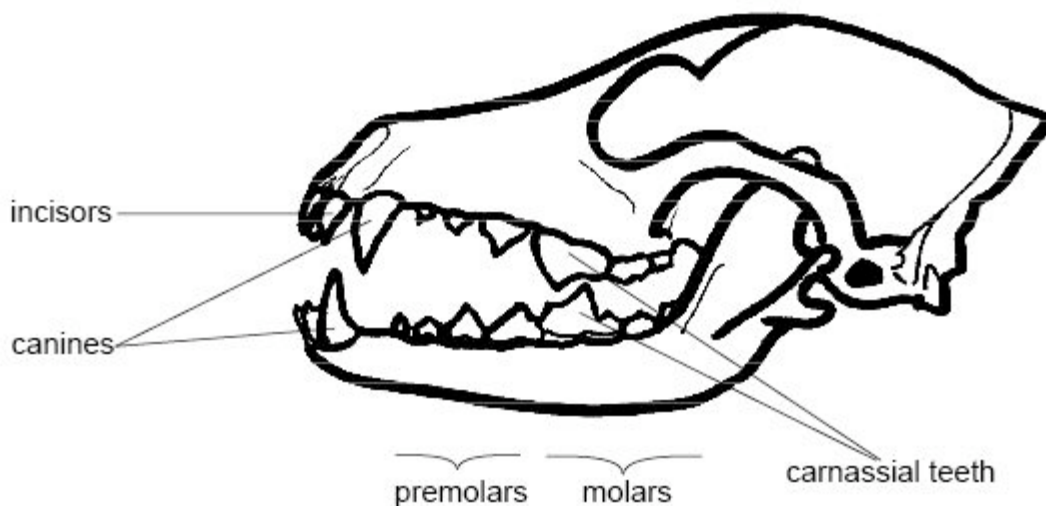
Date T: compare a herbivore and an carnivore's teeth

Write a paragraph describing the similarities and differences between the sheep and the dog's teeth. In each sentence use a connective from each box below:

Equally	Likewise	Similarly	Like
While	Whereas	Instead	Unlike

Because	So that	Since	As
---------	---------	-------	----

A dog's skull



A sheep's skull

